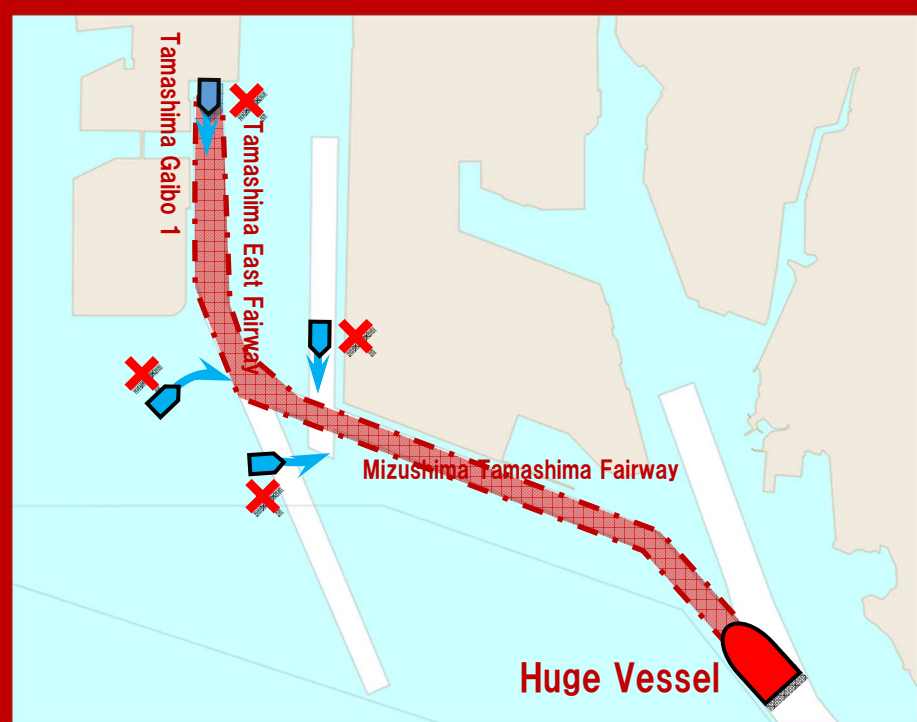


Huge vessels entering and leaving the Tamashima district will start from 2017.

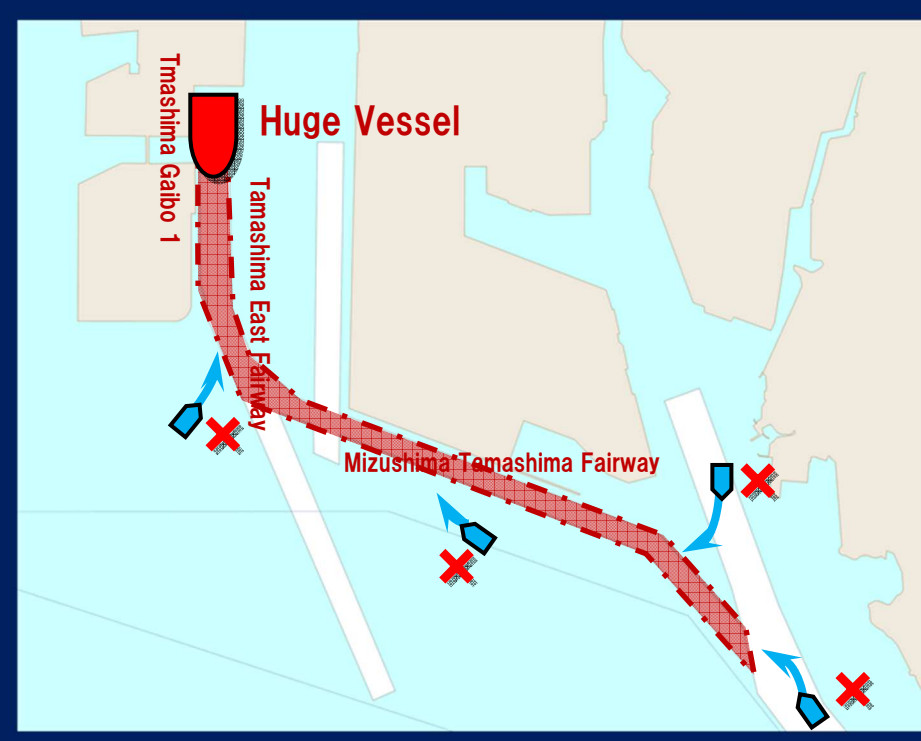
- Huge vessels of LOA 200m or more will enter and leave the harbor by **Mizushima Tamashima Fairway and Tamashima East Fairway**.
- Because of the limited width of the Fairways all vessels, **except motor launches and similar of under 20 g.t., are prohibited from encountering a huge vessel**.
- For the duration that huge vessels navigate the fairways, **Mizushima Port VTIS center will organize traffic based upon the Guidelines for Traffic Organization in Mizushima Port** that the Port authority has established.

Outline of Rules when Huge vessels entering and leaving the port.

Inbound



Outbound



Those ships navigating the Mizushima Tamashima Fairway and Tamashima East Fairway, and those trying to enter or cross it from outside the Fairway, should ensure that they follow the Guidelines not to encounter, nor try to cut in ahead of, the huge vessels.



- Mizushima Port plans for functional enhancement will establish Mizushima Port VTIS center which will organize traffic, based on the Guidelines for Traffic Organization in Mizushima Port, to maintain safe navigation of shipping and for greater efficiency when huge vessels arrive in the port.
- Ships entering and leaving Mizushima Port are **to report to Mizushima Port VTIS center (call sign Mizushima Port Radio)** by International VHF radio or by ship's phone, **to obtain latest updates about port operations and to ensure safety of navigation**.

Traffic Information of Huge Vessels

Information of Huge vessels In Tamashima district of Mizushima Port
Download the Guideline
<http://www.mizushima.port-schedule.jp/>
Mizushima Port VTIS enter (Tel:+81-86-526-0301)



Okayama Prefectural Government

Ports and Harbors Division, Development of Public Works
Tel:+81-86-226-7485

Mizushima Port and Harbor Office, Bicchu General Service Bureau
Tel:+81-86-444-7141